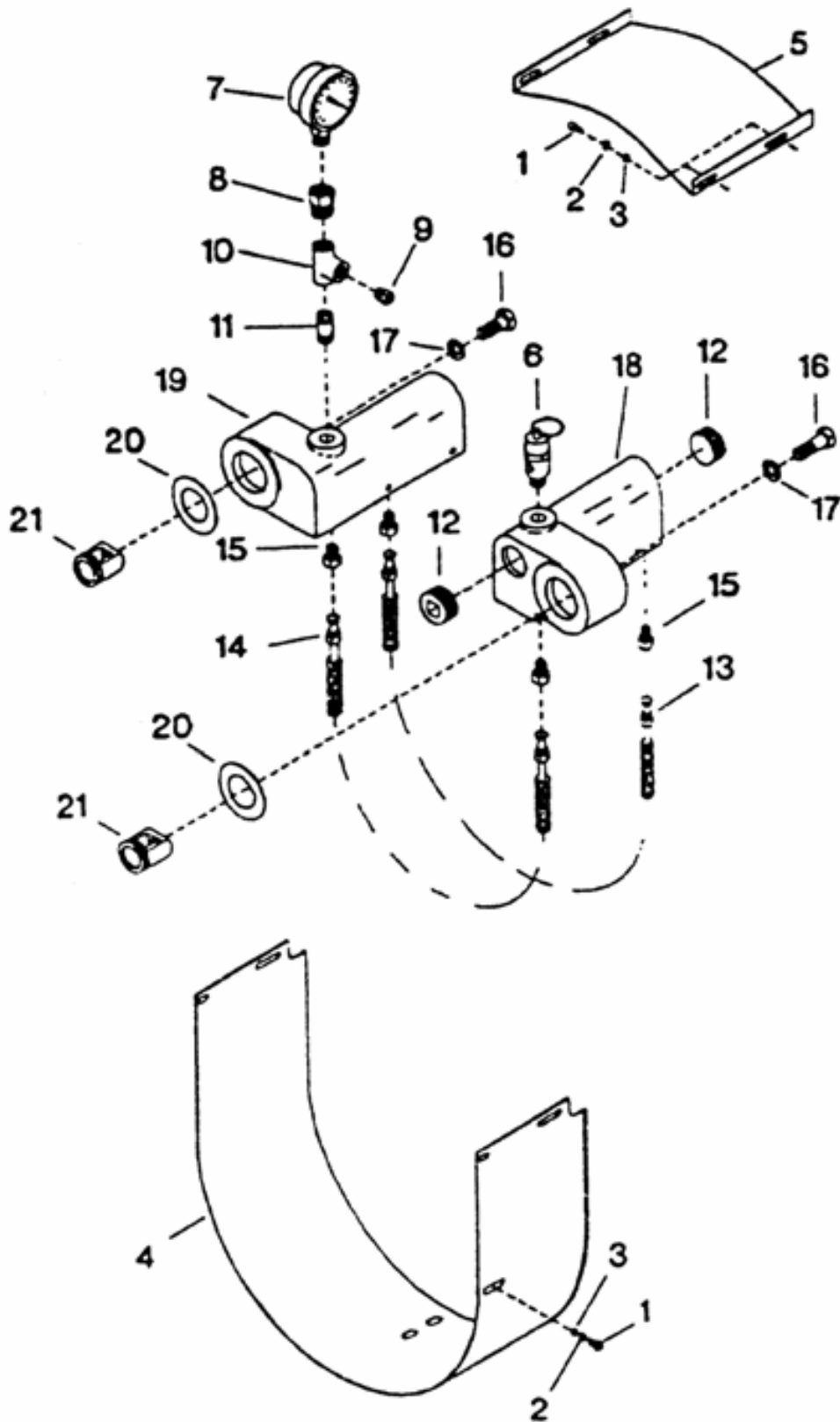


5. INTERCOOLER & SHROUD ASSEMBLY - MODEL 7T2



5. INTERCOOLER & SHROUD ASSEMBLY - MODEL 7T2

No.	Description	Ref Part No.	QTY
5-00	Intercooler Assembly	32058893	1
5-01	Screw Cap Hex 1/4" X 1/2"	95053070	8
5-02	Washer Spring 1/4"	32035479	8
5-03	Washer 1/4" Flat	95094298	8
5-04	Shroud I/C- Bottom	30822928	1
5-05	Shroud Intercooler Top	30218242	1
5-06	Valve Safety 1/4 X 160 PSIG	97048110	1
5-07	Gauge Pressure 2.5" Dia 0-100 PSI BTM	95736898	1
5-08	Damper Assembly - Pulsation	30282396	1
5-09	Connector	95082491	1
5-10	Tee M.S. 1/4" X 1/4" X 1/4"	95063459	1
5-11	Nipple 1/4"	32175051	1
5-12	Plug Pipe 1"	95101457	3
5-13	Tube Assembly Finned 3/8" with Nut	32024697	6
5-14	Tube Assembly Finned 3/8" with Nut	32024689	6
5-15	Connector Tube 3/8" * 1/4" NPT	95083143	24
5-16	Screw Hex Head 5/8" X 1-1/2" LG	95002168	2
5-17	Washer Copper 5/8"	30550735	2
5-18	Manifold L.P.	37128964	1
5-19	Manifold H.P - Intercooler	37185360	1
5-20	Gasket Manifold	30294870	2
5-21	Connection Manifold	30221121	2