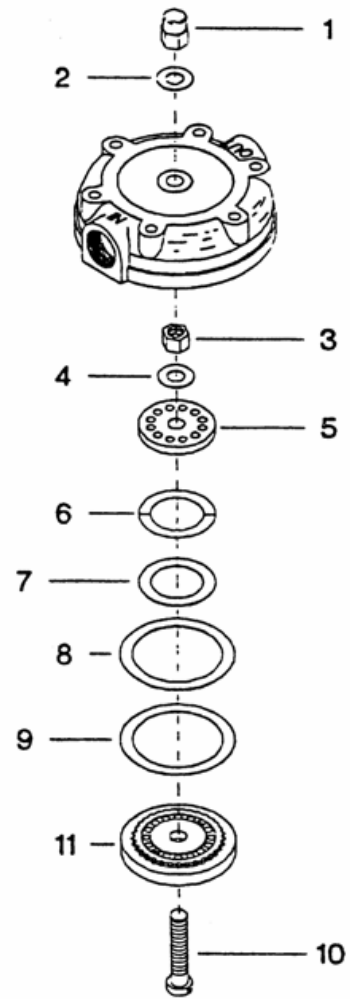
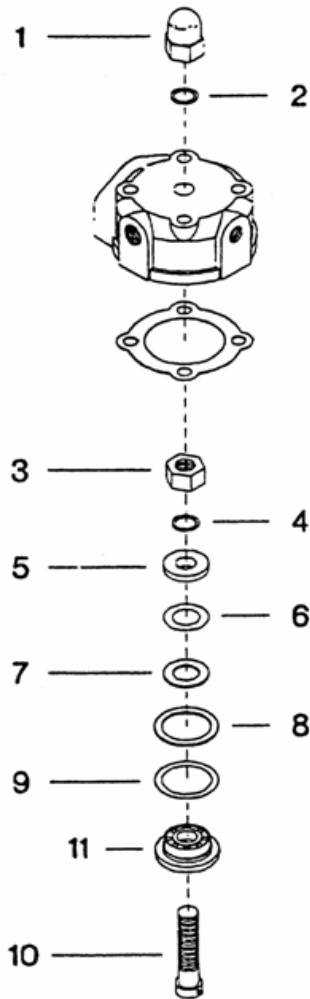


4. 20 GA & 50 GA CONCENTRIC RING VALVE ASSEMBLY - MODEL 7T2



4. 20 GA & 50 GA CONCENTRIC RING VALVE ASSEMBLY - MODEL 7T2

No.	Description	Ref Part No.	QTY
4-00A	Air Valve Assembly 2"	31517725	1
4-01A	- Nut Hex Acron 5/8 - UNF	30287643	1
4-02A	- Washer Belleville 5/8"	37092913	1
4-03A	- Nut Hex Lock 5/8"	95076808	1
4-04A	- Washer Belleville 5/8	37092913	1
4-05A	- Stop Plate (IN/DIS)	30218945	1
4-06A	- Spring Valve (IN/DIS)	30221584	1
4-07A	- Plate Valve (IN/DIS)	30215925	1
4-08A	- Plate Valve Inlet	30215834	1
4-09A	- Spring Valve (IN/DIS) 15/8"	30221493	1
4-10A	- Bolt Valve 1-5/8"	30220941	1
4-11A	- Seat Valve (IN/DIS) 1-5/8"	30217657	1

No.	Description	Ref Part No.	QTY
4-01B	Valve Assembly Size 50	37004843	1
4-01B	- Nut Hex Acron 3/4 - UNF	30287650	1
4-02B	- Washer Belleville 3/4	37092897	1
4-03B	- Nut Hex Lock 3/4"	95076816	1
4-04B	- Washer Belleville 3/4"	37092897	1
4-05B	- Stop Plate (IN/DIS)	30218978	1
4-06B	- Spring Valve (IN/DIS)	30221501	1
4-07B	- Plate Valve (IN/DIS)	30181499	1
4-08B	- Plate Valve Inlet	30215891	1
4-09B	- Spring Valve (IN/DIS) 15/8"	30221550	1
4-10B	- Bolt Valve 5"	30279897	1
4-11B	- Seat Valve (IN/DIS) 5"	30229538	1