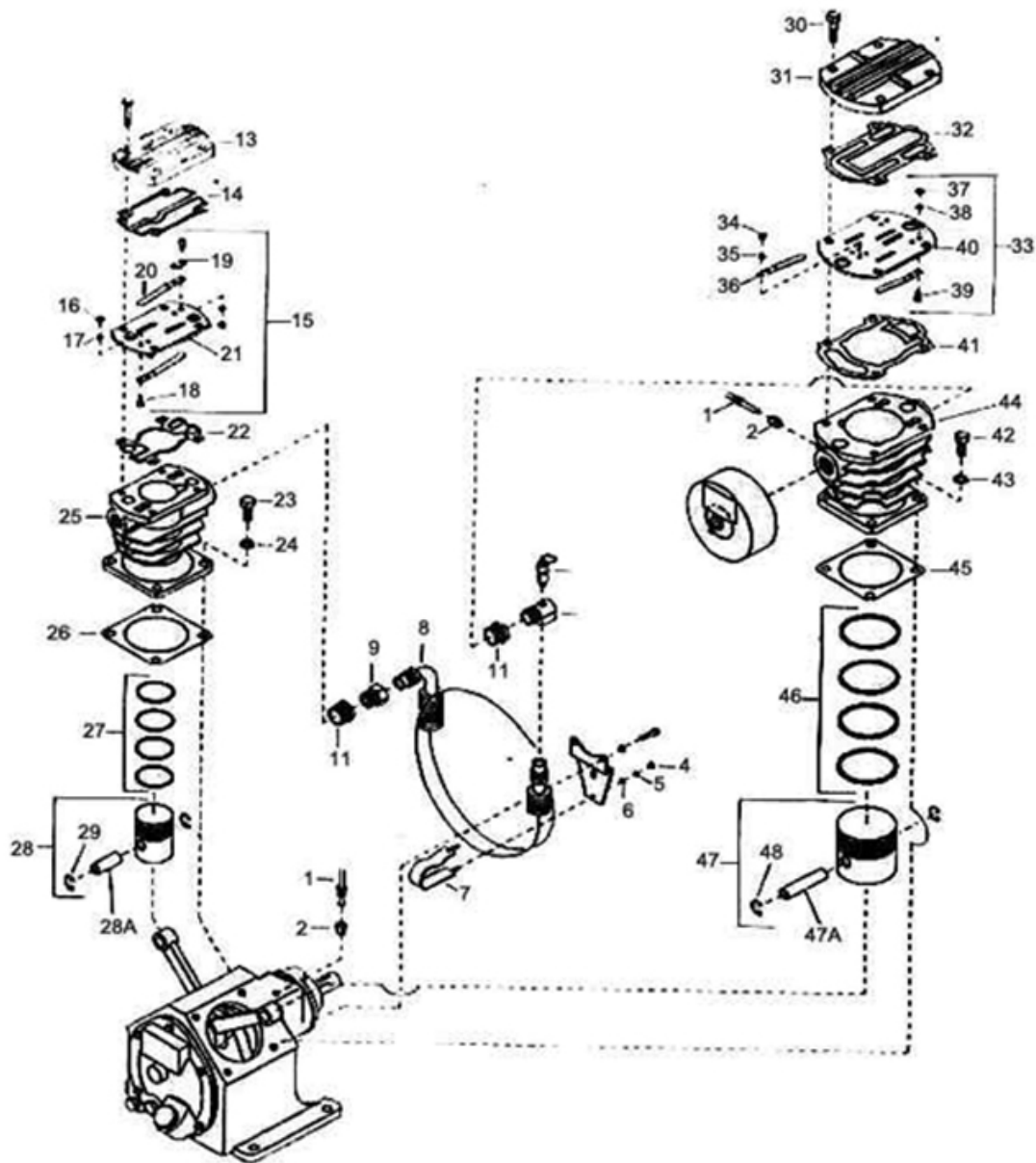


2. BARE COMPRESSOR - MODEL 242



2. BARE COMPRESSOR - MODEL 242

No.	Description	Ref Part No.	QTY
2-1	Tube Assembly, Breather	37008042	1
2-2	Connector, Tube	95082483	2
2-3	Valve, Safety-60 PSIG	72062151	1
2-4	Nut-Hex	95416335	2
2-5	Lockwasher, Spring - 1/4"	32035479	2
2-6	Washer, Flat -1/4"	95094298	2
2-7	Clamp Tube	32157356	1
2-8	Tube Assembly, Finned-Intercooler	32125262	1
2-9	Connector, Tube	95083275	1
2-10	Elbow, Tube	30212682	1
2-11	Bushing Reducing	95038048	2
2-12	Capscrew Hex Head	95103800	4
2-13	Airhead - Highpressure	37127354	1
2-14	Gasket, Airhead-Highpressure	32154163	1
2-15	Assembly, Spacer/Valve- High Pressure	32141194	1
2-16	– Nut-Hex	95416335	4
2-17	– Lockwasher, Spring-1/4"	32035479	4
2-18	– Screw, Fillister Head	32035461	4
2-19	– Shim, Finger Valve	32139891	1
2-20	– Valve, Finger	30221170	2
2-21	– Spacer	37127248	1
2-22	Gasket, Space	32154247	1
2-23	Capscrew - Hex Head	95053567	4
2-24	Gasket, Copper - 1/2"	95674701	4
2-25	Cylinder, Air- 2.5" -High Pressure	37128634	1
2-26	Gasket, Flange	30289870	1
2-27	Set, Ring - 2.5"	32198368	1
2-28	Piston, Air-Complete - 2.5-High Pressure	30288515	1
2-28 I	Pin Piston	30287783	1
2-29	– Ring Lock	30298020	2
2-30	Capscrew- Hex Head	95104188	4
2-31	Airhead - Lowpressure	37127362	1
2-32	Gasket, Airhead-Low Pressure	30279038	1
2-33	Assembly, Spacer/Valve - Low Pressure	32024283	1
2-34	– Screw, Fillister Head	32035495	2
2-35	– Washer Belleville - 1/4"	32217382	2
2-36	Valve Finger	30221170	4
2-37	– Nut Hex	95416335	2
2-38	– Lockwasher Spring	32035479	2

2. BARE COMPRESSOR - MODEL 242

No.	Description	Ref Part No.	QTY
2-39	– Screw, Fillister Head	32035461	2
2-40	– Spacer	37127289	1
2-41	Gasket, Spacer	30280515	1
2-42	Capscrew-Hex Head	95053567	4
2-43	Gasket, Copper - 1/2"	95674701	4
2-44	Cylinder, Air-4" - Low Pressure	37128535	1
2-45	Gasket - Flange	30289870	1
2-46	Set, Ring -4"	32194151	1
2-47	Piston, Air-Complete - 4" - Low Pressure	30215263	1
2-47 I	Pin Piston	30288393	1
2-48	– Ring, Lock	30298020	2