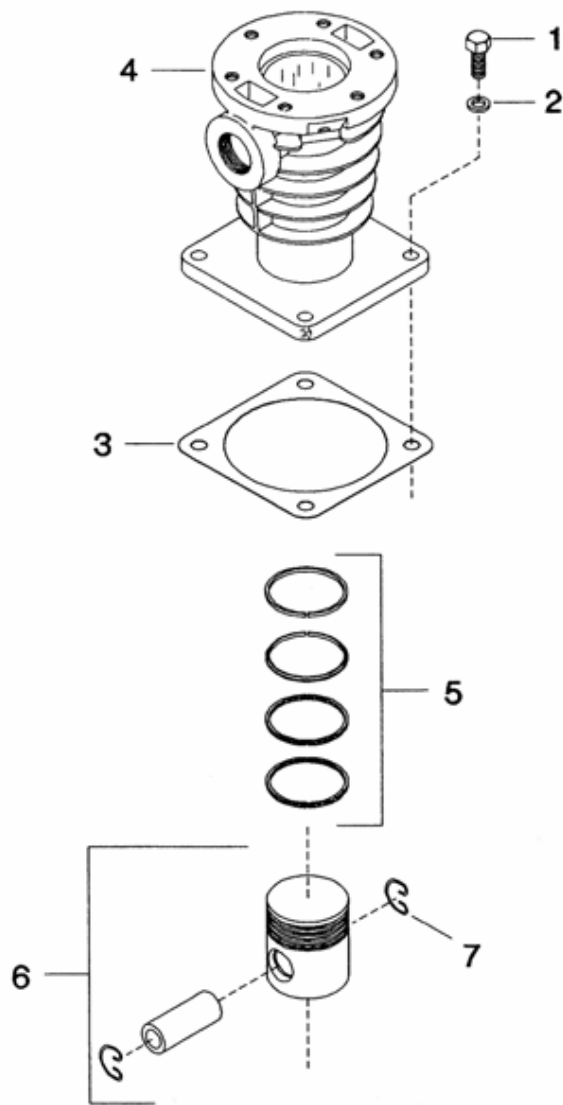
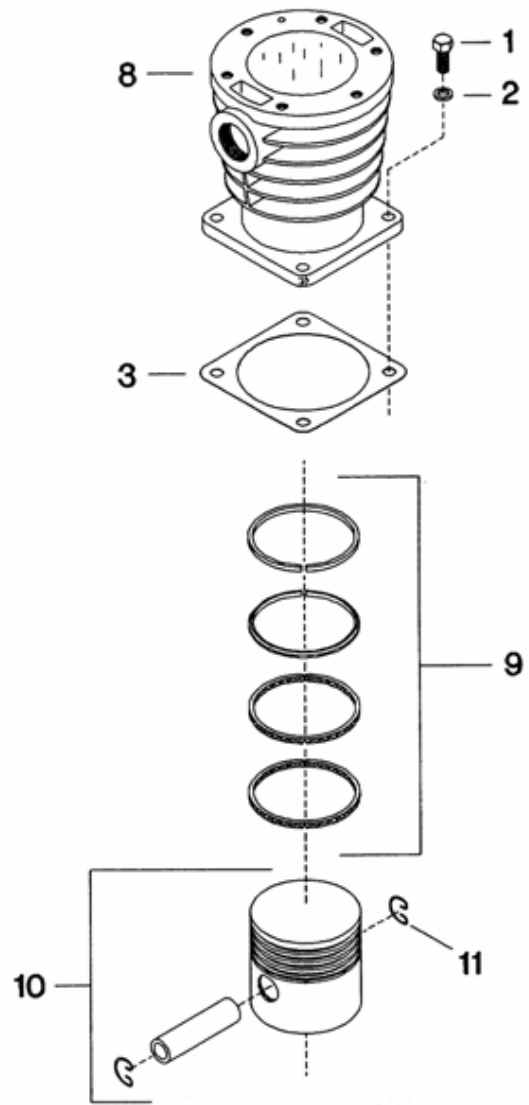


## 4. PISTON, RINGS & CYLINDERS - MODEL 15T



**3.5 INCH  
PISTON, RINGS & CYLINDER**



**5 INCH  
PISTON, RINGS & CYLINDER**

## 4. PISTON, RINGS & CYLINDERS - MODEL 15T

No.	Description	Ref Part No.	QTY
4-1	Capscrew - Hex 1/2-13 X 1 - 1/4	95053567	12
4-2	Gasket - copper washer 1/2	95674701	12
4-3	Gasket, flange	30294235	3
4-4	Cylinder, air - 3.5 inch high pressure	37128501	1
4-5	Set ring - 3.5 inch high pressure	32218182	1
4-6	Piston air - complete - 3.5 inch pressure	30215198	1
4-7	– Ring lock	30288450	2
4-8	Cylinder, air - 5 inch low pressure	37128782	2
4-9	Set ring - 5 inch low pressure	32198376	2
4-10	Piston air - complete - 5 low pressure	32054504	2
4-11	– Ring lock	30288450	2