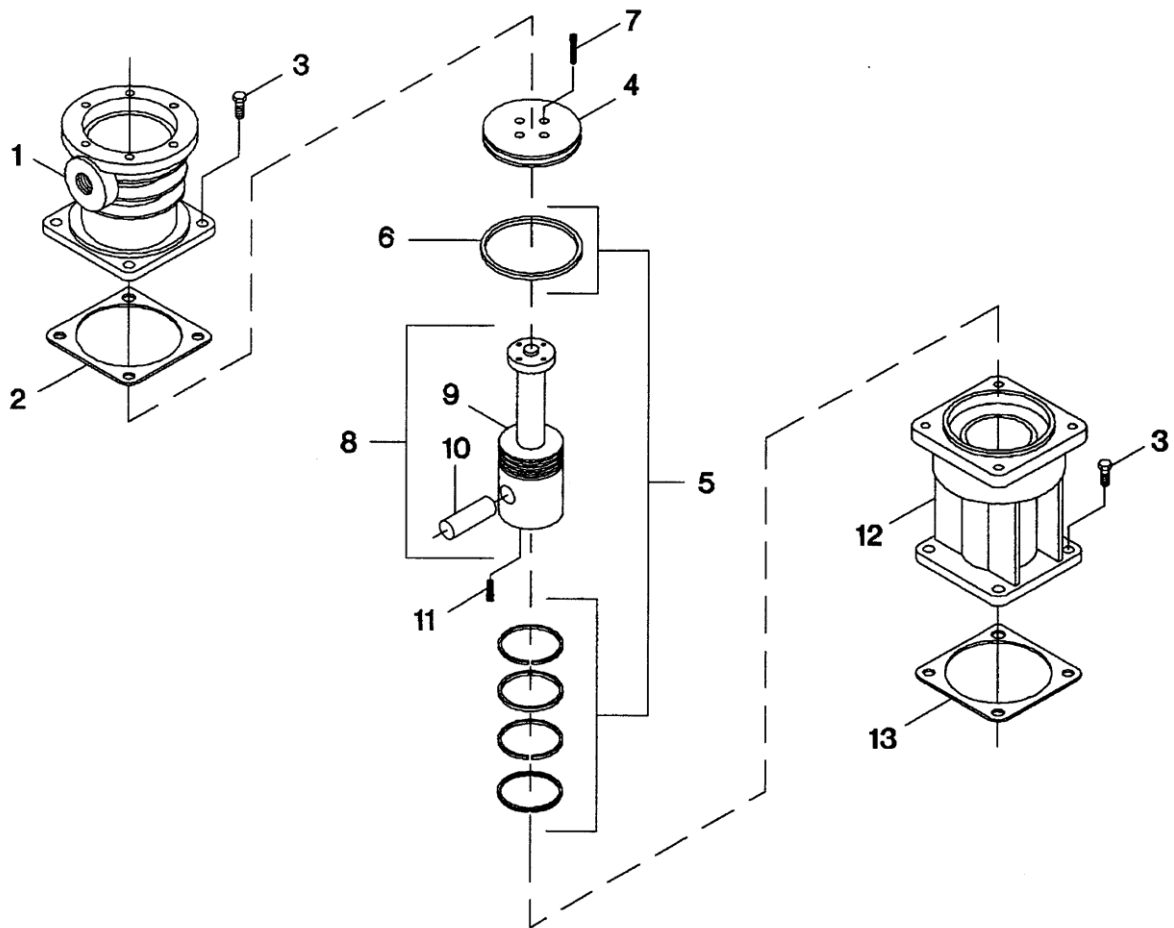


6. FIRST STAGE (5") PISTON, CYLINDER & CROSSHEAD - MODEL 5T2NL



6. FIRST STAGE (5") PISTON, CYLINDER & CROSSHEAD - MODEL 5T2NL

No.	Description	Ref Part No.	QTY
6-1	Cylinder, Air - 5' - High Pressure	32222416	1
6-2	Gasket, Flange	37135985	1
6-3	Capscrew - M12 X 30	32225195	8
6-4	Top, Piston	37140043	1
6-5	Set, Ring	32015109	1
6-6	– Ring, Piston - Step Seal	37197993	1
6-7	Screw, Socket Head - M6 X 16	32225153	4
6-8	Assembly, Crosshead/Pin	32222796	1
6-9	– Crosshead	NSS	1
6-10	– Pin, Crosshead	37170271	1
6-11	Setscrew - M10 X 25	32225211	1
6-12	Guide, Crosshead	32222325	1
6-13	Gasket, Flange	30294201	1