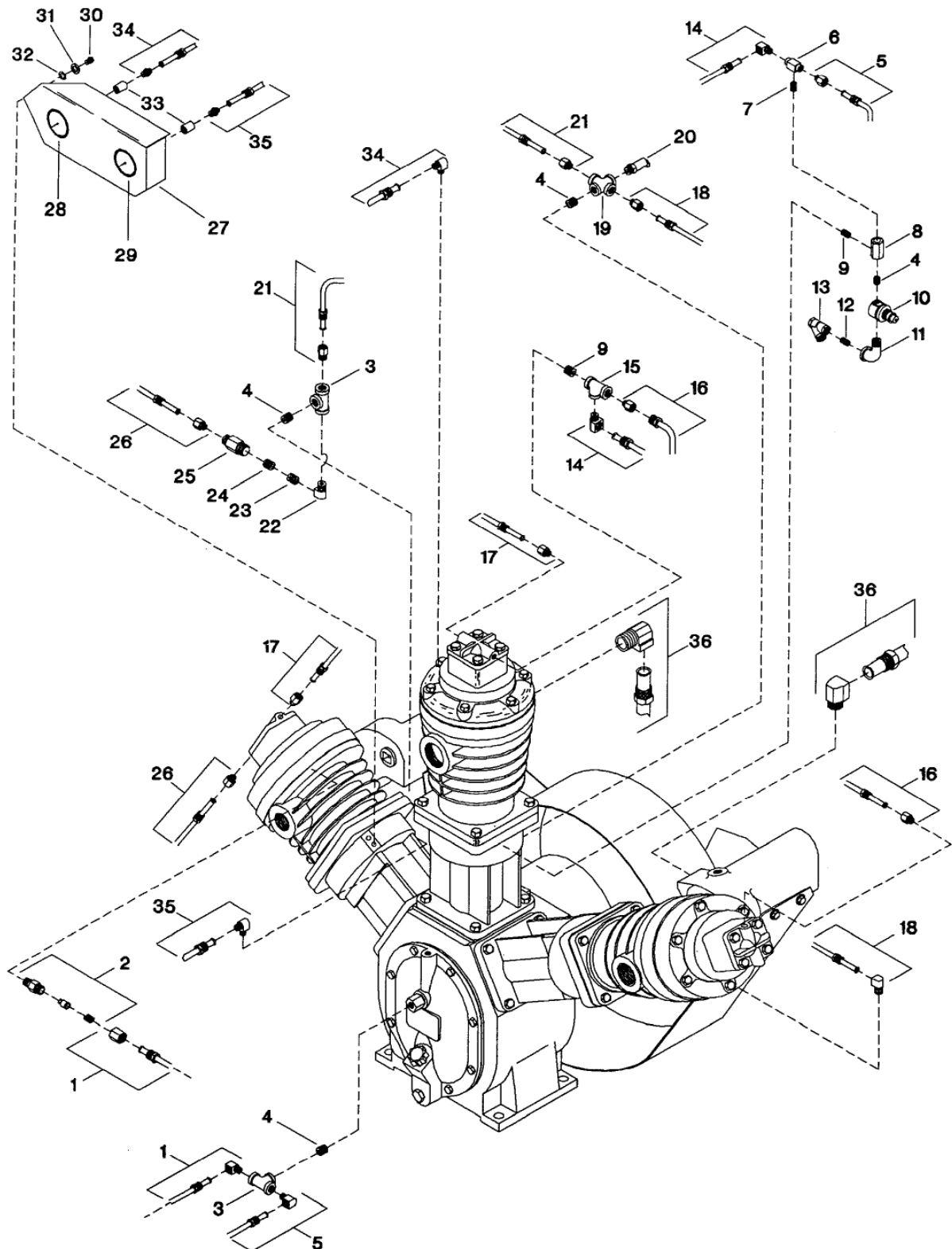


## 7. TUBE ASSEMBLIES - MODEL 10T3NLM



## 7. TUBE ASSEMBLIES - MODEL 10T3NLM

No.	Description	Ref Part No.	QTY
7-1	Assembly, Tube - Cylinder Relief Valve/Pilot Valve -Complete	32241622	1
7-2	Valve, Cylinder Relief	32225567	1
7-3	Tee, Pipe - 1/4"	95298485	2
7-4	Nipple, Close - 1/4 X 7/8°	95426714	4
7-5	Assembly, Tube - Pilot Valve/Shuttle Valve - Complete	32241614	1
7-6	Valve, Shuttle	37007572	1
7-7	Nipple, Close	95242491	1
7-8	Valve, Intercooler Vent	32225799	1
7-9	Nipple, Close - 1/8 X 3/4'	95242491	2
7-10	Regulator	32225807	1
7-11	Elbow, Reducing - 3/8 X 1/8"	32231060	1
7-12	Nipple, Pipe - 1/4 X 1/8"	32225823	1
7-13	Filter	32225831	1
7-14	Assembly, Tube - Shuttle Valve/Low Pressure	32241630	1
	Constant Speed Unloader - Complete		
7-15	Tee, Pipe - 1/8"	95063418	1
7-16	Assembly, Tube - Constant Speed Unloader - Lp/Lp - Complete	32241721	1
7-17	Assembly, Tube - Constant Speed Unloader - Lp/Hp - Complete	32241655	1
7-18	Assembly, Tube - Distance Piece - Lp/Lp - Complete	32241705	1
7-19	Cross, Pipe - 1/4"	32127201	1
7-20	Valve, Relief - 60 Psig	72062151	1
7-21	Assembly, Tube - Distance Piece - Lp/Hp - Complete	32241713	1
7-22	Elbow, Reducing - 1/4 X 7/8"	32225716	1
7-23	Bushing, Reducing	95038030	1
7-24	Bushing	32225666	1
7-25	Valve, Check	32001141	1
7-26	Assembly, Tube - Distance Piece/Csu - Complete	32241648	1
7-27	Panel, Gauge	37140068	1
7-28	Gauge, Pressure - Intercooler	32020547	1
7-29	Gauge, Pressure - Discharge	32020554	1
7-30	Capscrew - M6 X 12	32225229	4
7-31	Washer, Flat - 6mm	32225310	4
7-32	Washer, Lock - 6mm	32225302	4
7-33	Coupling, Pipe - 1/8°	32131674	2
7-34	Assembly, Tube - Intercooler/Pressure Gauge - Complete	32241572	1
7-35	Assembly, Tube - Distance Piece/Pressure Gauge - Complete	32241580	1
7-36	Assembly, Tube - Lp Manifold/Cylinder - Complete	32241663	1