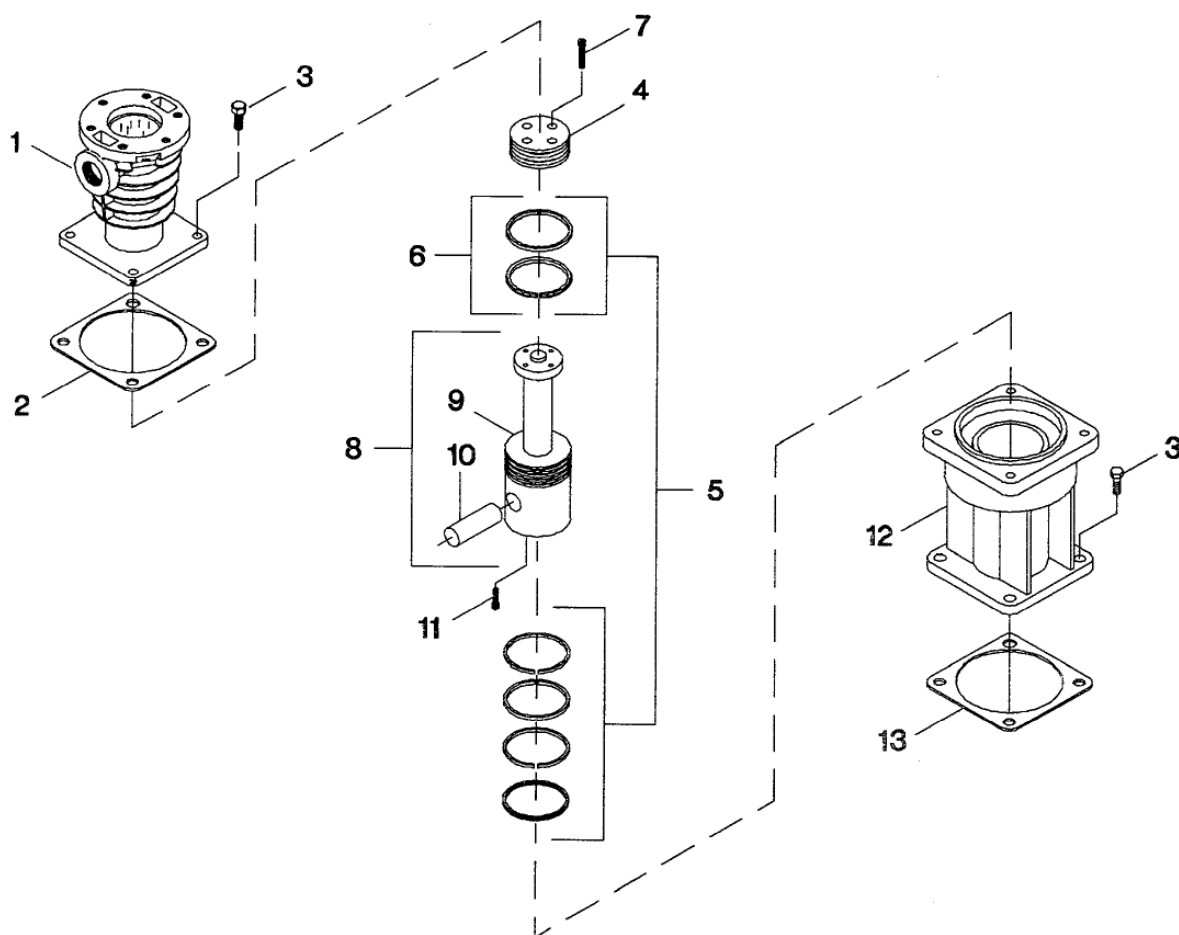


5. 4.25" PISTON, CYLINDER & CROSSHEAD - MODEL 10T3NLM



5. 4.25" PISTON, CYLINDER & CROSSHEAD - MODEL 10T3NLM

No.	Description	Ref Part No.	QTY
5-1	Cylinder, Air - 4.25" - High Pressure	32222408	1
5-2	Gasket, Flange	37135985	1
5-3	Capscrew - M12 X 30	32225195	8
5-4	Top, Piston	37140050	1
5-5	Set, Ring	32015125	1
5-6	– Set, Piston Ring	37139862	2
5-7	Screw, Socket Head - M6 X 30	32225161	4
5-8	Assembly, Crosshead/Pin	32222796	1
5-9	– Crosshead	NSS	1
5-10	– Pin, Crosshead	37170271	1
5-11	Setscrew - M10 X 25	32225211	1
5-12	Guide, Crosshead	32222325	1
5-13	Gasket, Flange	30294201	1