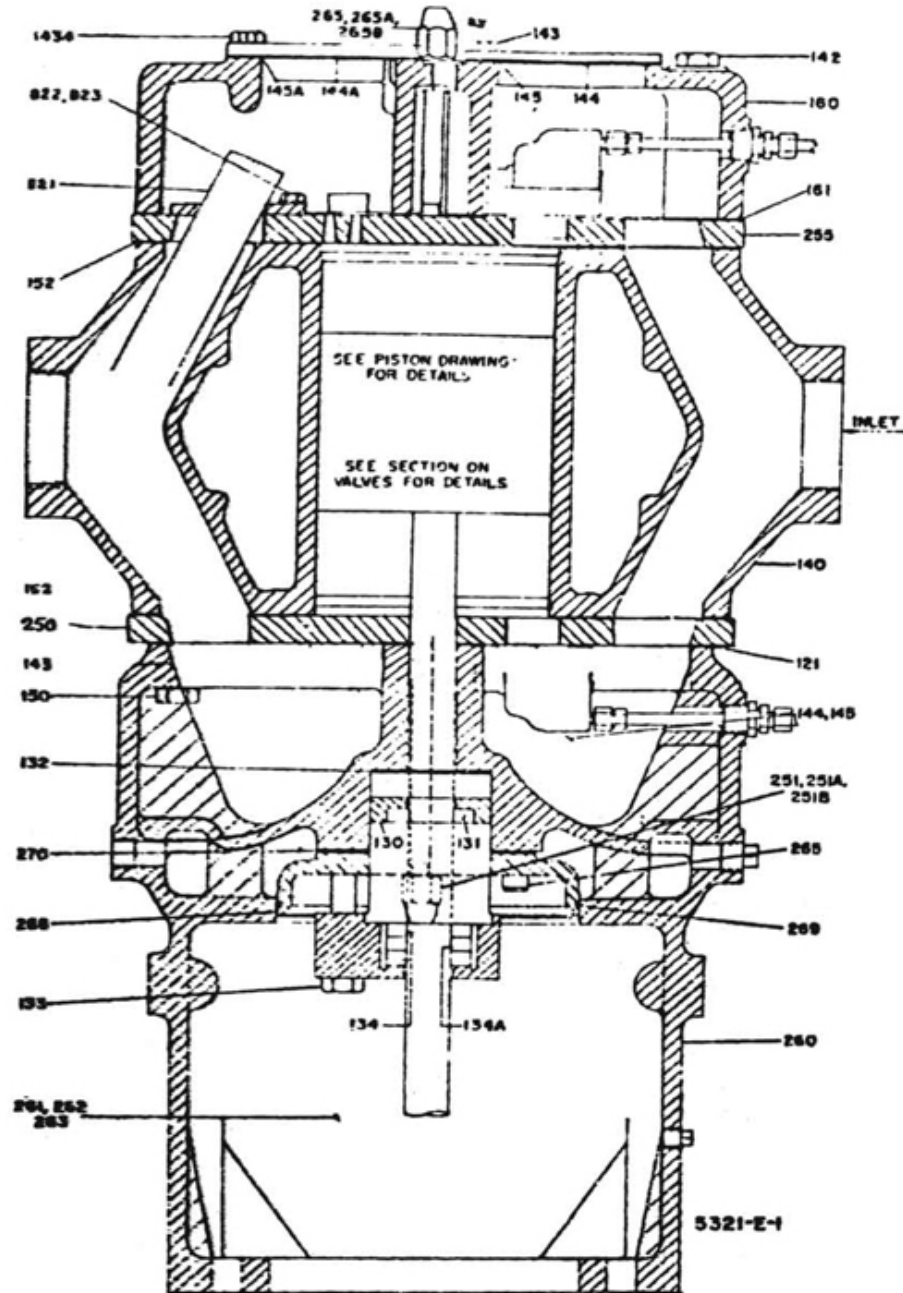


3. CYLINDER & HEAD COMPLETE - MODEL 8 x 7 LUB



5. CYLINDER & HEAD COMPLETE - MODEL 8 x 7 LUB

No.	Description	Ref Part No.	QTY
–	Pack-Case & Ring	1-7999C1P1T	–
–	Metallic Type	–	–
130	Packing-Case	1-7999C1P1	1
–	Metallic Type	–	–
132	Gasket-Packing Case	X1561T8	1
131	Ring & Spring	03G24S	1
–	Packing Set	–	–
–	3PR Rings per Set	–	–
134	Ring Scraper	28A11G24D	2
134	Ring Scraper	27A11G24D	1
133	Capscrew-Packing	35A2C337	2
–	Cylinder Complete	3208E1T	–
140	– Cylinder	3208E1	1
152	– Gasket-Cylinder	8369D1P3	2
–	Port Plate Frame End Complete	2-3206E1P1T	–
250	Port Plate - Frame End	2-3206E1P1	1
251	Stud - Frame End	11A3J273	2
251B	Gasket	X1013T611	2
251A	Cap Nut	61A4C5	2
–	Rollpin - Locating	25A13C332	2
–	Port Plate Outer End	3-3206E1P1T	–
255	Port Plate Outer End	3-3206E1P1	1
256	Stud Outer End	11A3G264	2
–	Gasket	X1013T611	2
256B	Capnut	61A4C5	2
256A	Rollpin - Locating	25A13C332	2
–	Head Frame & Dist PC	5328E1T	–
260	Head Frame & Dist PC	5328E1	1
120	Head Frame	EIN-7135	1
120A	Distance Piece	EIN-7868	1
72	Gasket - Frame Head	WIN-7272	1
122	Stud - Frame Head	90A3C06026	8
122A	Nut for Stud	16A4C8	8
121	Gasket-Port Plate	8165D1P2	1
–	Pipe Plug - Drain	30A7S3	1
261	Cover	9391D1	1
262	Gasket - Cover	8274D1	1
263	Capscrew - Cover	35A2C217	4

5. CYLINDER & HEAD COMPLETE - MODEL 8 x 7 LUB

No.	Description	Ref Part No.	QTY
265	Capscrew - Stuf. Box	119A2A227	4
268	Cover - Stuf. Box	A-8301D1	1
269	Ring "O" Stuf. Box	20A11CM264	1
270	Gasket - Stuf Box Cover	5914-C1	1
144	Cover - Valve	8598B1	4
145	Gasket - Cover	8599B1	4
143	Capscrew - Cover	35A2J217	24
150	Capscrew - Frame Head	2-838681	8
-	Head Outer Complete	12845D1T	-
160	Head Outer	12845D1	1
161	Gasket	8165D1P4	1
144	Cover Inlet Valve	8563B1	1
145	Gasket Cover	8565B1	1
143	Capscrew - Cover	35A2J109	5
144A	Cover - Disch Valve	8564B1	1
145A	Gasket - Cover	8566B1	1
143A	Capscrew Disch Valve	35A2J217	7
142	Capscrew Outerhead	6-8386B1	8